

Fairchild Gold Corp



Nevada Titan Project

Multi-Metal Mining Opportunity

Nevada's Next Large Scale Mine

Why Invest?

Multi-target, multi-metal system with district-scale upside

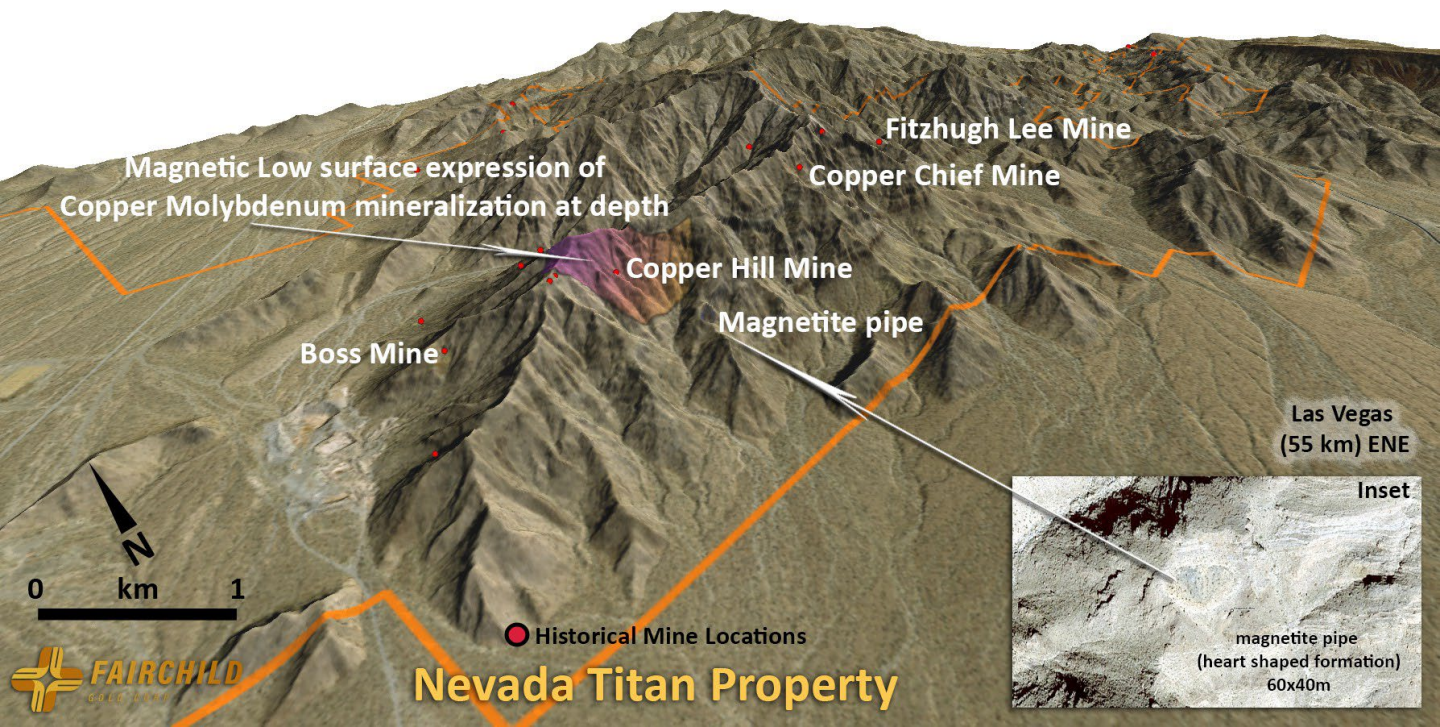
Confirmed high-grade Copper, Silver, and Platinum Group Elements at surface

Drill-ready targets in 2025

Located in mining-friendly Nevada

Tier-1 exploration team with proven success

Exploration is ongoing focusing on discovering the copper molybdenum primary target source rock situated beneath Fairchild's main property



Location and Access

Goodsprings District, Clark County - just 55km southwest of Las Vegas.
All-season access with power, water, and infrastructure already in place.
Part of prolific Walker Lane Belt and Battle Mountain Trend extension.

Project Highlights

Land Position: 300+ claims (~6,150 acres)

Deposit Styles:

Porphyry Cu-Au-Ag-Mo Skarn (Fe-
Cu-Zn-Pb-Au-Ag)

CRD (Carbonate Replacement Deposits)

High-grade veins + breccia pipes (Sandy Targets)

Nevada Titan property includes many historic mines including December,
Copperside, Copper Chief, Fitzhugh, Columbia, Rose, Mobile, Azurite.

Fairchild identified 2.5 kilometer oxidized copper trend, never drill
tested.

Management Team

Nikolas Perrault, CFA, Executive Chairman

Luis Martins - CEO, former Director of Geology & Mining Institute (Portugal)

Sergei Diakov – Technical Committee Chair, discoverer of Oyu Tolgoi & Nuevo
Chaquiro

Aaron McBreairty - Senior Geologist, porphyry/AI exploration expert

Richard Redfern - QP, 43-101 author

Capital Structure (Aug 2025)

Shares Outstanding: 121.19M

Warrants: 70.05M (\$0.10-\$0.15)

Contact

info@fairchildgold.com | www.fairchildgold.com | TSX-V: FAIR



Fairchild Gold
website

Nevada Titan
Technical
Presentation



Disclaimer & Forward-Looking Statements

Disclaimer

Certain statements contained herein, as well as oral statements that may be made by Richard Redfern QP may constitute “forward-looking statements.” Any reference to a “Historical Resource” contained herein is considered historical in nature and as such is based on prior data and reports prepared by previous property owners. Some of the rock chip and drillhole sample assays presented herein are from historical data that may pre-date NI 43-101. Most of the assays were performed by professional, ISO-certified assaying companies. The historical works mostly were conducted under the supervision of a person who is/was a Qualified Person. All post 2012 rock chip geochemical analyses were performed by certified assay labs. As such, the historical sampling, assaying and QA/QC protocols are not known, and therefore these results must also be seen and interpreted in an historical context. These data are presented here for historical information purposes only. These data have been studied and verified and felt to be appropriate at this early stage of this exploration project by Richard R. Redfern, MSc. and QP, who has written 43-101 technical reports on mineral properties.

The contents of this presentation, including the historical information contained herein, are for informational purposes only and do not constitute an offer to sell or a solicitation to purchase any securities referred to herein.

Forward looking statements

This presentation includes certain forward-looking statements about future events and/or financial results which are forward looking in nature and subject to risks and uncertainties. Forward-looking statements include without limitation, statements regarding the company’s plans, goals or objectives and future completion of mine feasibility studies, mine development programs, capital and operating costs, production, potential mineralization and reserves, exploration results and future planning and objectives of Fairchild. Forward-looking statements can generally be identified by forward-looking terminology such as “may,” “will,” “expect,” “intend,” “estimate,” “anticipate,” “believe,” or “continues” or the negative thereof or variations thereon or similar terminology. There can be no assurance that such statements will prove to be accurate and actual results and future events could differ materially from those anticipated in such statements. Important factors that could cause actual results to differ materially from expectations include risks associated with mining generally and pre-development stage projects in particular including but not limited to changes in general economic conditions, litigation, legislative, environmental and other judicial, regulatory, technological and operational difficulties, labor relations matters, foreign exchange costs & rates.

